

# Wheelog

FY 2023  
Annual Report





## Creating a world in which ANYONE can go ANYWHERE

### Message from the CEO

#### Contribute to the SDGs

We are very grateful for your ongoing support. I'm Yuriko Oda, the representative of WheelLog, a general incorporated association. Our mission is to "create a world in which ANYONE can go ANYWHERE," and from the beginning, we were determined to contribute to the SDGs. I have always emphasized the SDGs in my talks.

I first heard about the concept of SDGs in 2015 when I attended an international conference in Kenya. That experience inspired me to pursue activities that contribute to the SDGs, for both people with

disabilities and those who are able-bodied. This was also a determination to create services needed for an unprecedented new era.

I have known about the Ministry of Foreign Affairs' Japan SDGs Award since its inception in 2017 and aimed to apply every year. However, each year, I missed the application deadline and felt overwhelmed by the impressive achievements and work of the awarded organizations. But 2023 was different.

#### Seven hours before the deadline!

I was busy with daily work and realized on September 1st that the application period was ending. When I checked the site, it was already 5 pm on the day of

the deadline. I decided I had to try. From that moment, I spent seven hours working hard until the 11:59 pm deadline to complete the application documents. Management members Yoichi Oda, Yuichi Matsushita, and Aoi Sugiyama, who suddenly found themselves very busy, did not object. They likely deemed it futile to raise any concerns.

Once we set our goals, we moved forward, each completing our part of the application. We submitted it at 11:57 pm, just before the deadline. We passed the first and second screenings and ultimately we have received the esteemed Japan SDGs Promotion Headquarters1 Award (Prime Minister's Award) at the 7th Japan SDGs Awards.

(Photo from left)

Yoshimasa Hayashi, Chief Cabinet Secretary, Yuriko Oda, Founder and CEO, WheelLog  
Fumio Kishida, Prime Minister, Yoko Kamikawa, Minister of Foreign Affairs

Source: Prime Minister's Office Home Page

If you keep thinking "someday," that day will never come. I realized that the "instantaneous action" I took when I learned the deadline was today led to success.

### Empowering Contribution to SDGs

We at WheelLog! support the SDGs principle of "leaving no one behind." Rather than simply assisting individuals with disabilities, we promote inclusive activities that empower anyone, including those with disabilities, to actively contribute to the SDGs if they wish. Through our efforts, we are committed to advancing the SDGs, particularly Goal 11, "Creating sustainable cities."

Since our app's launch seven years ago, we've sustained operations with the support of users, volunteers, and supporters. To ensure the app's long-term viability, we're planning a major update in 2024 (and actively pursuing crowdfunding!).

Our organization is embarking on an unprecedented initiative—a unique culmination of our collective efforts. Preserving and nurturing this initiative is our priority.

While global change may not occur overnight, challenges related to wheelchairs persist, and new issues arise in less visible areas. Nevertheless, I aim to raise awareness of these issues, establish safe and inclusive environments, and cultivate problem-solving abilities. Let's continue promoting meaningful, effective, enjoyable, and compassionate activities, passing on our legacy to future generations for the betterment of Japan and the world.

Yuriko ODA  
Founder and CEO, WheelLog 織田友理子



Commemorative photo of WheelLog Management staffs

(Photo from left) Yuichi Matsushita, Yuriko Oda, Yoichi Oda, Aoi Sugiyama

# WheeLog! is working on four accessibility areas to create a world where people don't give up even in wheelchairs.

## Action 1 Dissemination of accessibility information

**Challenges Faced by Wheelchair Users**



Finding essential information for going out can be challenging.

**WheeLog! - User-generated Accessibility Map App**

**User-generated Accessibility Map**


Our app provides accessibility information that wheelchair users need while going out.



- 1 Accessibility Map**  
Users can check information such as accessible toilets, elevators, and parking lots on the map.
- 2 User-Generated Map**  
Users contribute barrier-free information by posting updates on the app, which helps generate the accessibility map.
- 3 Multilingual Access**  
English  
日本語  
中文 (简体)  
中文 (繁體)  
한국어  
español  
português  
français  
Deutsch  
русский  
**10 languages**

## Action 3 Fostering a Barrier-Free Mindset

**Challenges Faced by Wheelchair Users**




Difficulty accessing elevators due to overcrowding.

**Wheelchair City Walk Program**

**Overcoming Barriers Awareness**

Enhance understanding and awareness of wheelchair challenges through city walk events and training courses.


[Watch video](#)



- 1 Lecture**  
Acquiring essential knowledge about wheelchairs and accessibility.
- 2 Wheelchair Experience**  
Navigating the city in teams, performing tasks while using wheelchairs.
- 3 Data Collection**  
Gathering information on accessible areas such as toilets and elevators, shared via the WheeLog! app.
- 4 Reflection**  
Discussing observations and potential improvements, sharing outcomes with participants.

## Action 2 Improving Accessible Environments

**Challenges Faced by Wheelchair Users**



Steps at store entrances can make it hard for wheelchair users to get in.

**Accessibility Surveys**

**Accessibility Surveys**

People with disabilities check facilities and tourist spots to find barriers and suggest improvements.

- 1 On-Site Surveys by Wheelchair Users**  
Wheelchair users visit the site to assess it from their own perspective.
- 2 Following National Standards**  
Surveys follow guidelines from Japan's Ministry of Land, Infrastructure, Transport, and Tourism.
- 3 Report**  
The investigation findings are compiled into a report, including improvement suggestions.

## Action 4 Promotion of Accessibility Systems

**Challenges Faced by Wheelchair Users**



To be rejected due to regulations or policies.

**Policy recommendations to the government**

**Inclusive Policy Voices**

Voices from people with disabilities influence policy recommendations at national and local levels, aiming to enhance accessibility systems.

**1 Stakeholder Advocacy**

We collect feedback from wheelchair users and advocate for their needs to government bodies.

**Promotion and Awareness of Accessibility Systems**

**Barrier-Free Advocacy**

To promote Japan's barrier-free system, we are undertaking government projects and working on raising awareness about the system.

In addition, we participate in demonstrations and committees organized by the Ministry of Land, Infrastructure, Transport and Tourism, workshops, and the Tokyo Metropolitan Welfare City Planning Committee, to advance barrier-free policies for people with disabilities.

# Action 1 Dissemination of accessibility information

## WheelLog! app

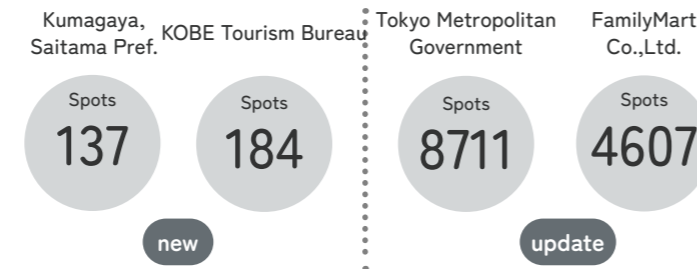
### Annual usage data

The WheelLog! app has been utilized by over 10,000 users throughout the years. Through the valuable contributions of our users, we have accumulated an extensive collection of accessible locations and wheelchair travel logs.



### Incorporating Accessibility Information

Accessibility information was provided by local governments, tourism bureaus, companies, and more, and has been incorporated into the WheelLog! app.



## Crowdfunding



We conducted a crowdfunding campaign from June to July and received 8,218,400 yen in support from a total of 533 supporters. The funds were used to improve the app. Thank you very much to everyone who supported us.

We would like to extend our sincere thanks to the individuals listed on the right for their exceptional support.

### High Value Supporters

#### 100,000 Yen Support

- Duskin Fukuoka Co., Ltd.
- Mr. Hiroyuki Ishida
- Mr. Atsushi Yamakawa
- Five A Company Co., Ltd.
- Mr. Muneharu Taniguchi, Matsuzaka Co., Ltd.
- Duskin Kumamoto Co., Ltd.
- Ms. Mizuki Iwamura, Google
- Medical Corporation WHM, Clinic Plus
- OTORISYOIN Co., Ltd.
- Duskin Kumamoto employees and Hearty
- Mr. Ichiro Takahashi
- Mr. Wataru Tobe
- Mr. Yoshihisa Shioda
- Daisanbunmei-sha, Inc.
- Ms. Aoi Sugiyama
- Mr. Kohei Nanbu, CANVARs Co., Ltd.
- Ms. Hiromi Oki
- Yaes Co., Ltd.
- Shimoyama Zaimoku Ten Corp.

#### 50,000 Yen Support

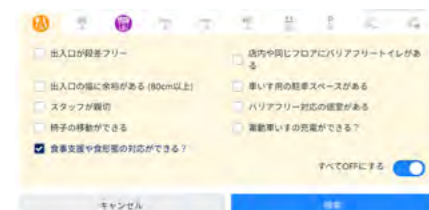
- Mr. Masahiro Hashimoto
- Mr. Fumito Ito, Shimane University
- Studio Yossy

### WheelLog! App Update

We have updated the WheelLog! app using the generous support from our crowdfunding campaign.

### Meal Support Information

We have added the capability to store information about restaurants and accommodations that provide meal support for people with eating and swallowing disorders. We are currently working on a project to import this information into the app and will continue to collect data.



### Web Search for WheelLog! Information

To make accessibility information available to more people, we have updated the functionality so that the information stored in WheelLog! can now be searched on the web. We will continue to improve this feature to provide accurate and useful information.

### Compatibility with the Latest Smartphones

We have upgraded the app's underlying system to ensure compatibility with the latest smartphones, allowing you to continue using the app seamlessly.

#AccessibilityInformation

#WheelLog!

#barrier-free map

#OpenData

# Action 2 Improving Accessible Environments

## Accessibility Survey



### Accessibility survey

At the request of the Tokyo Metropolitan Park Association, a public interest incorporated association, we conducted an accessibility survey at Sakuragaoka Park in Tama City, Tokyo. This survey was carried out in accordance with the Tokyo Metropolitan Welfare Community Development Ordinance. Researchers who can walk alongside wheelchair users visited the site to assess the park's accessibility.



### Asahikawa survey

In November, we conducted a survey in Asahikawa, Hokkaido, using wheelchairs to investigate Universal MaaS, a service promoted by Asahikawa City and ANA designed to make transportation comfortable and stress-free for those with mobility concerns. Departing from Haneda Airport, participants explored Asahikawa Airport, Asahikawa Station, and various sightseeing spots in the Asahikawa area in wheelchairs to verify "lump support arrangements" and assess the accessibility of local attractions. The findings were compiled into an article and published on the WheelLog! official website.



## Questionnaire Survey

### Survey on Wheelchair User Concerns

We conducted a survey to identify the issues faced by wheelchair users when navigating large facilities. We received 309 responses, which helped us pinpoint challenges in areas such as toilets, elevators, parking lots, restaurants, and accommodation facilities. Based on these findings, we are launching a project to address these issues.



### Community Contribution Activities at Amgen inc.

On October 13th, Amgen inc., a company specializing in pharmaceuticals, conducted a community contribution activity using the WheelLog! app. On the day of the survey, over 500 employees participated across 15 cities nationwide, contributing a total of 691 spots of accessibility information.



### Sunshine City Survey

We were commissioned by Sunshine City Corporation to conduct an accessibility survey. Since 2020, WheelLog! has been actively involved in researching accessibility at Ikebukuro's Sunshine City. For this project, we examined the accessibility of restaurants, toilets, and observation decks, and assessed wheelchair accessibility at Sunshine Theater. Additionally, we provided training and recommendations for reasonable accommodations. The results of the survey are available on the "Sunshine City Accessibility Information Site" and the official website of "Sunshine Theater."



### Collection of Portable Ramp Case Studies

To encourage restaurants and other venues to use portable ramps, we conducted a case study questionnaire. Using the examples we gather, we are running a campaign to promote the integration of these ramps within local governments.



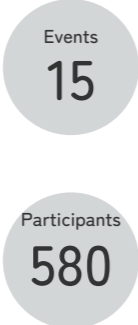
#Physical accessibility

#accessibility survey

#Questionnaire Survey

## Wheelchair City Walk Event

In our Wheelchair City Walks, both people who have never used a wheelchair and those who do come together to explore the city. They learn about and tackle various "barriers" in the urban environment, fostering a Barrier-free Mindset through shared experiences. We are expanding these efforts across multiple areas, including urban development, regional revitalization, tourism, and education. These events are also being implemented by companies and schools. In 2023, we held Wheelchair City Walking Events in Sapporo, Tokyo, Kanagawa, Osaka, Kobe, Tokushima, and other locations, including our first overseas event. We hosted a total of 15 events throughout the year, with approximately 580 participants.



### Effects of the Wheelchair City Walk Program

**For Able-Bodied Individuals**  
Helped raise awareness about people with disabilities and fosters a barrier-free mindset.

**For Wheelchair Users**  
Enhanced desire to go out and explore.

Research conducted at the Tohoku University Graduate School has demonstrated the effectiveness of this program.

### Cooperation with Health Rent of DUSKIN CO., LTD

We are grateful to Duskin Health Rent for providing wheelchairs at the event. Their support has been invaluable.



### Textbook for Wheelchair City Walk Program

For those participating in the Wheelchair City Walk Program, textbooks on accessibility and wheelchairs are available for purchase at the official WheelLog! store. If you're interested, please visit the store. For bulk purchases, such as for schools, please contact us directly.



Purchase Here



### In the Medical and Welfare Field



#### WAM Subsidy Project

As part of the WAM subsidy project, wheelchair city walk events were held in Sumida and Machida, Tokyo, in July and September. See the next page for details.

#SubsidisedProject #Sumida #Machida



#### Japanese Society of Clinical Occupational Therapy Academic Conference with WheelLog!

This event was held twice as a lead-up to the 9th COT in March. The first session on August 26th connected six occupational therapist training schools online, with participants mainly students and wheelchair users. The second session on March 8th involved society members, therapists, occupational therapy students, and wheelchair users.

#Society #OccupationalTherapist



### With Gold Sponsors



#### Aioi Nissay Dowa Insurance × WheelLog! in Kobe 2023

On August 19th, we held a wheelchair city walk event in Kobe City with WheelLog!'s gold sponsor, Aioi Nissay Dowa Insurance Co., Ltd.

#AioiNissayDowaInsurance #Kobe



#### Fujitsu × WheelLog! in Kawasaki 2023

We held a wheelchair city walk event in Kawasaki City on June 10th with Fujitsu Limited, a gold sponsor of WheelLog.

#Fujitsu #Kawasaki

### First Time Overseas!



#### WheelLog! in Helsinki 2023

WheelLog! held its first overseas city walk on May 30th at Microsoft in Helsinki, Finland, with the generous support of Fujitsu Limited.

#Fujitsu #Finland

### With High School Students



#### SeDaTuNa with WheelLog! in Tokushima

As part of a Tokushima Prefectural Board of Education project, we held a wheelchair city walk with Tokushima high school students on July 17th. On January 28th, those students led another event with local residents.

#tokushimaprefecture #BoardofEducation #SeDaTuNa



#### RDD Myojo 2024 with WheelLog!

Osaka Meisei High School, RDD Japan, and WheelLog! collaborated to hold a wheelchair experience event on March 23rd.

#osakameiseigakuen # RDD

### With Companies and Organizations



#### Talk & Wheelchair City Walk Event in Sapporo City

On September 8th, as part of the "Universal MaaS" project, we held the "Towards a Cohesive Society! Talk & Wheelchair City Walk Event" in Sapporo city.

#SapporoCityHall #ANA



#### Seminar Hosted by Tokyo Marathon Foundation

At the Tokyo Marathon Foundation seminar at the National Stadium from June 9 to 11, we led a training session on wheelchair city walks.

#Foundation #NationalStadium

### Steering Committee City Walk



#### Wheelchair City Walk 2024 by WheelLog!

A city walk, organized by the WheelLog! steering committee, was held on March 2nd with the theme of "Discovering Hachioji's charms and challenges."

#Hachioji

# Action 3 Fostering a Barrier-free Mindset

## Welfare And Medical Service Agency (WAM) Subsidy Project

As part of the FY2020 subsidy project by the Incorporated Administrative Agency, Welfare And Medical Service Agency (WAM), we launched an initiative aimed at establishing local support systems that enable wheelchair users to venture out with confidence. Our summer and autumn wheelchair city walk programs in Sumida and Machida, Tokyo, involved 152 participants, including medical professionals, care staff, government representatives, companies, wheelchair users, and students. We also collaborated with Tohoku University Graduate School to evaluate program effectiveness through a questionnaire survey.



Participants  
**152**

Sumida



### Human resources development training

Date and Time: July 15, from 10:00 AM to 5:00 PM  
Location: Yahiro Hanamizuki Elderly Support Center  
Participants: 25 people (20 able-bodied, 5 in wheelchairs)



### Wheelchair city walk event

Date and Time: September 16, from 10:00 AM to 5:00 PM  
Location: Yahiro Hanamizuki Elderly Support Center  
Participants: 49 people (43 able-bodied, 6 who use wheelchairs)

Machida



### Human resources development training

Date and Time: July 30th, 10:30 AM to 5:00 PM  
Location: Machida Central Community Center  
Participants: 30 people (24 able-bodied, 6 who use wheelchairs)



### Wheelchair city walk event

Date and Time: September 30, 10:30 AM to 5:00 PM  
Location: Machida City Lifelong Learning Center  
Participants: 48 people (41 able-bodied, 7 who use wheelchairs)

### WAM Subsidy Report

WAM Subsidy Report We have prepared a report on the project aimed at establishing local support systems that enable wheelchair users to venture out with confidence. The report includes in-depth information about the wheelchair walking program, case studies, and research findings.



Read the report



Participants  
**114**

### Wheelchair city walk program debriefing Webinar

On Friday, February 17th, we conducted the 'Wheelchair city walk program debriefing Webinar. Groups from Sumida and Machida, Tokyo who collaborated on this project, along with individuals from Tohoku University Graduate School, presented reports, analyses, and evaluations of the city walk program.

## Lectures and events

Events  
**15**

### Lectures

- Fujitec Co., Ltd. (in-house training)
- QVC Japan Co., Ltd. (in-house training)
- Fujitsu Limited (in-house training)
- Kansai University of Social Welfare (Open campus)
- Suku Suku Step, after-school day service (Online)

### Webinar

- WeeLog x Snack Toromi Collaboration Night (June)
- Swallowing disorders Webinar (July)
- Charity Webinar (December)

### Event presentation/participation

- Next Fashion Designer of Tokyo 2024: Examination Committee/Talk Show
- Pedestrian Space DX Study Group: Ministry of Land, Infrastructure, Transport and Tourism, Symposium
- MyData 2023: MyData International Conference
- AD-Tech Forum: Aioi Nissay Dowa Insurance Co., Ltd., Exhibition
- Sumida Smile Festival: Sumida Ward Event
- World Rare and Intractable Disease Day RDD2024: RDD Japan, Event
- 3rd MBT Film Festival: Judging Committee



#Barrier-free Mindset

#WheelchairExperience

#Friends

#CorporateTraining

#TrialClass

# Action 4 Promotion of accessible system

## Japan Tourism Agency

### "Barrier-free Mindset Certification System for Tourist Facilities"

Review  
**431**

The Japan Tourism Agency commissioned us to carry out two projects related to the "Barrier-Free Mindset Certification System for Tourist Facilities."

### Verification Work Regarding Certification Standards

From October to January, we reviewed 431 applications for this certification system. We provided support services, including creating business tools and necessary evaluation manuals, as well as transferring the evaluation system. Based on this, we examined the future of the certification system. The created manuals are posted on the Japan Tourism Agency's website.

### Video Creation/Public Relations Work

Wheelog! has produced training videos about wheelchairs, visual impairments, and hearing impairments. We also created videos introducing this certification system in the previous two years. This year, we conducted an interview survey with experts on "visual impairments" and "developmental disorders" and created a training video. The videos are posted on the Japan Tourism Agency's website and official YouTube channel.

### What is Barrier-Free Mindset?

The term "barrier-free mind" means that all people, regardless of their mental and physical characteristics or ways of thinking, communicate and support each other to deepen mutual understanding (as per the "Universal Design 2020 Action Plan (February 2017)" decision by the Universal Design 2020 Related Ministerial Meeting).

Japan Tourism Agency

### "Barrier-free Mindset training video"



Watch video



Watch Video



#TourismAgency

#CertificationSystem

#Evaluation

#VideoCreation

## Promotion of activities by individual supporters

### Steering Committee 2023

In 2023, we formed a "steering committee" with those who supported us as individual supporters and worked on various event activities.



Supporter Exchange Meeting 2023 Spring (May)

On May 13th, we hosted a face-to-face meet-and-greet with 37 WheelLog! supporters at the DAWN clone robot cafe in Nihonbashi, Tokyo.



Christmas Party 2023 (December)

On December 23rd, we hosted a Christmas party at Dawn Robot Café in Tokyo to deepen understanding of eating and swallowing disorders.



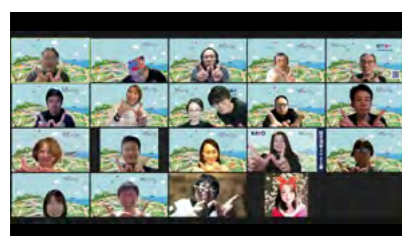
In-person Steering Committee Meeting (August)

On August 5th, we hosted a mini wheelchair city walk and social gathering for the steering committee in Tokyo. Members deepened their interactions while collecting barrier-free information.



Strategy Office Meeting (October)

The Strategy Office met weekly online to discuss WheelLog!'s activities and promote the Steering Committee's initiatives. We also had a face-to-face meeting in October.



Regular Monthly Meetings

The steering committee held regular online meetings once a month. Members discussed and collaborated on events to promote WheelLog!'s activities, dedicating time beyond their work and studies.

Committee members

21

Social Media Followers

+200

Online Circle

15



### Activities by volunteers



Kawasaki, Kanagawa Prefecture

Sponsored by the Kawasaki Tsunagaro-kai, a wheelchair experience walk using the WheelLog! app took place around Kawasaki Station.



Aoyama Gakuin University

Students and WheelLog! supporters organized a wheelchair city walk event at Aoyama Gakuin University's Aoyama Campus.



International Home Care and Rehabilitation Exhibition H.C.R.

With Permobil Co., Ltd.'s cooperation, we promoted WheelLog! at this exhibition with our supporters.



Wheelchair City Walk in Kyoto

In November, we walked in Kyoto with a volunteer, enjoying the autumn leaves. We documented the accessibility route on our official website.

## Support from corporate sponsors

### Gold Sponsor

Gold Sponsor

あいおいニッセイ同和損保



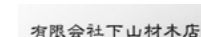
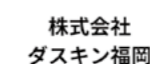
### Silver Sponsor

Silver Sponsor



### Bronze Sponsor

Bronze Sponsor



We extend our heartfelt gratitude to all our sponsors who support WheelLog!'s mission.

### Recruitment of Sponsor Companies

We seek corporate sponsors who share our vision. If you're interested in collaborating with us, please reach out to our office for more information.

Contact Information Email: info@wheelog.com

Platinum

from ¥10 million/year

Gold

from ¥5 million/year

for more details

Silver

from ¥1 million/year

Bronze

from ¥100 thousand/year



# Awards and Media Recognition

## Awards

Awards  
3



Source: Prime Minister's Office of Japan

### Ministry of Foreign Affairs "Japan SDGs Award"

At the 7th Japan SDGs Awards, we received the SDGs Promotion Headquarters (Prime Minister's) Award, the top honor in Japan. Prime Minister Kishida presented us with a certificate of commendation at the award ceremony on December 19th.



### Deloitte Tohmatsu Well-being Foundation

We were selected by the Deloitte Tohmatsu Well-being Foundation as a grant organization for the "Accessibility Promotion Project with Participation of People with Disabilities."



### FIT Charity Run 2023

We were chosen as a support organization by FIT Charity Run in 2023 and received a donation.

### WheelLog! App Featured in Google Play Advertisements



The "WheelLog!" app is prominently featured in Google Play advertisements at Tokyo Metro's Kasumigaseki Station, National Diet Building Station, and Nagatacho Station. You can also find WheelLog! in videos on the official Google Play channel on YouTube.

Watch Video



## Media Coverage Highlights

Publications  
22

### TV

- TOKYO MX TV (first broadcast: November 18, 2023)
- NHK WORLD (first broadcast: January 1, 2024)
- Nippon Television "news every." (first broadcast: February 20, 2024)

### Radio

- LuckyFM Ibaraki Broadcasting (July 3, 2023)
- Lucky FM Ibaraki Broadcasting (March 11, 2024)

### Internet Video

- Investors TV (YouTube)
- Sapporo City Talk Event (YouTube)

### Magazines/Information Magazines

- Clover summer issue (vol. 69)
- WAM (September 2023 issue)
- Ushio (September 2023 issue)
- SWITCH (Vol. 41 No. 12)
- Asnet (75th anniversary issue)
- ALLYU (January 2024 issue)
- AERA (February 19, 2024 issue)

### Web Articles

- Asahi Shimbun GLOBE+ (April 15, 2023)
- Catalonia Tourism Board Blog
- LIFULL STORIES
- LIFULL HOME'S ACTION FOR ALL
- Tamahiyo ONLINE
- Morgridge Foundation

### Station/Online Advertising

- Google Play (featured from September 11th)

# Financial report

## Activity Statement

From April 1, 2023 to March 31, 2024

(Unit: Yen)

Subject	amount	
<b>I Ordinary Revenue</b>		
1 Membership fees received	768,000	
2 Donations received	10,909,287	
3 Grant received, etc.	5,959,000	
4 business revenue	20,743,398	
5 Other income	14,485	
<b>Total Ordinary Revenue</b>		38,394,170
<b>II Ordinary Expenses</b>		
1. Business expenses		
(1) personnel costs	12,848,749	
(2) Other expenses	15,649,888	
<b>Total Project Costs</b>		28,498,637
2. Management fees		
(1) personnel costs	5,070,607	
(2) Other expenses	3,886,709	
<b>Total Management Fees</b>		8,957,316
<b>Total Ordinary Expenses</b>		37,455,953
<b>Ordinary Increase/Decrease for the Current Period</b>		938,217
<b>III Non-recurring Income</b>		
<b>Total Non-ordinary Income</b>		0
<b>IV Non-recurring Expenses</b>		
Adjusted loss on prior year profits and losses	0	
<b>Total Non-recurring Expenses</b>		0
<b>Change in Net Assets for the Period Before Tax</b>		938,217
Corporate tax, resident tax, and business tax		70,000
<b>Change in Net Assets for the Period</b>		868,217
Net assets carried forward from the previous period		44,273,556
<b>Net Assets Carried Forward to the Next Period</b>		45,141,773

## Balance Sheet

As of March 31, 2024

(Unit: Yen)

Subject	amount	
<b>I Assets section</b>		
1. current assets		
cash deposit	23,532,372	
Accounts receivable	16,803,692	
Inventory	62,816	
Advance payments	16,500	
Prepaid expenses	246,356	
<b>Total Current Assets</b>		40,661,736
2. Fixed assets		
(3) Investments and other assets		
Software repair reserve assets	7,500,000	
<b>Total Fixed Assets</b>		7,500,000
<b>Total Assets</b>		48,161,736
<b>II Liabilities Section</b>		
1. Current liabilities	3,019,963	
2. Fixed liabilities	0	
Total debt		3,019,963
<b>III Net Wealth Section</b>		
Net assets carried forward from previous period	44,273,556	
Change in net assets for the period	868,217	
<b>Total Net Wealth</b>		45,141,773
<b>Total Liabilities and Net Assets</b>		48,161,736

An audit was conducted on June 6, 2023. The auditor concluded that the financial statements, including the account of activities, balance sheet, and property inventory, accurately represent the corporation's assets and profit and loss status in all material respects. We have received an unqualified audit opinion, confirming the accuracy of these statements.